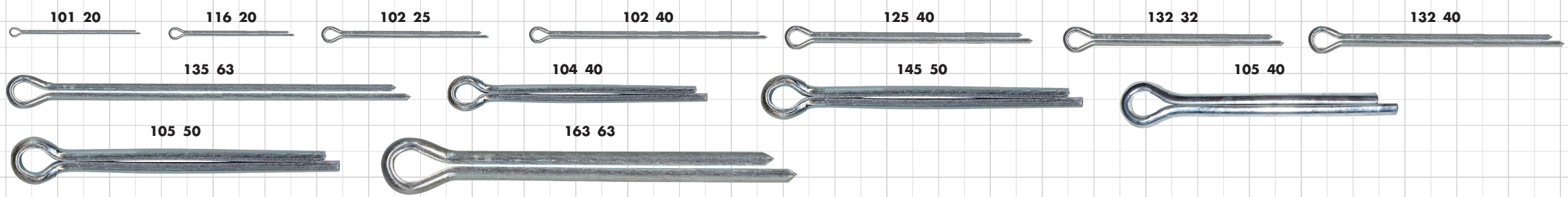




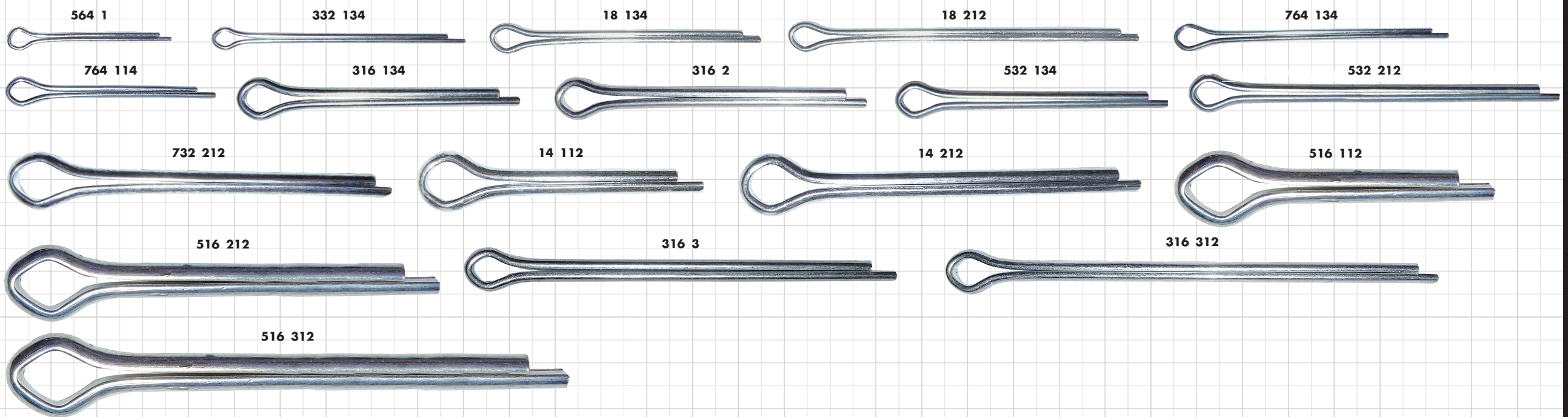
# CHAVETA MECÁNICA Y PERNOS DE PRESIÓN

MX027

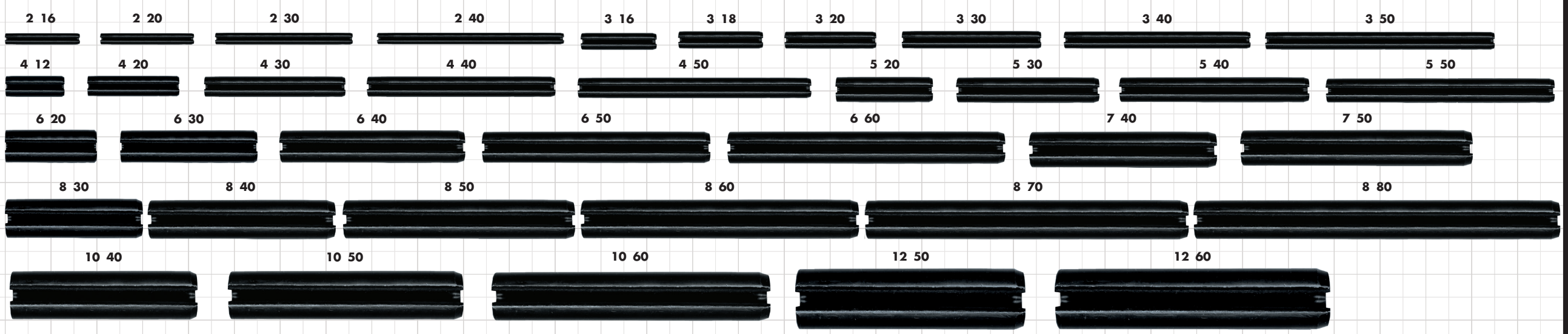
**FAMILIA 05117 CHAVETA MILIMÉTRICA DE ACERO CINCADEO ZEBRA. DIN 94 (ISO 1234)**



**FAMILIA 00470 CHAVETA EN PULGADAS DE ACERO CINCADEO ZEBRA**



**FAMILIA 00475 PERNO MECÁNICO DE PRESIÓN DE ACERO FOSFATADO. ISO 8752 (DIN 1481)**

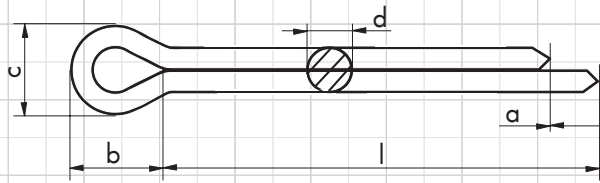


CHAVETA MECÁNICA: 470 - 475 - 5117

CHAVETA MECÁNICA: 470 - 475 - 5117

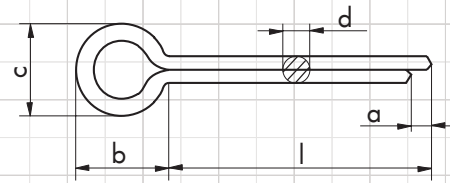
# DATOS TÉCNICOS

## FAMILIA 05117 MILÍMETROS



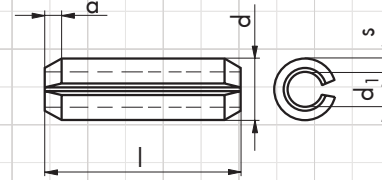
No. Artículo	d	l	a	b	c
05117 101 20	1	20	1.6	3	1.6
05117 116 20	1.6	20	2.5	3.2	2.4
05117 102 25	2	25	2.5	4	3.2
05117 102 40	2	40	2.5	4	3.2
05117 125 40	2.5	40	2.5	5	4
05117 132 32	3.2	32	3.2	6.4	5.1
05117 132 40	3.2	40	3.2	6.4	5.1
05117 135 63	3.5	60	4	7.2	5.9
05117 104 40	4	40	4	8	6.5
05117 145 50	4.5	50	4	9	7.2
05117 105 40	5	40	4	10	8
05117 105 50	5	50	4	10	8
05117 163 63	6.3	63	4	12.6	10.3

## FAMILIA 00470 PULGADAS



No. Artículo	d	l
00470 564 1	5/64"	1"
00470 332 134	3/32"	1 3/4"
00470 18 134	1/8"	1 3/4"
00470 764 134	7/64"	1 3/4"
00470 764 114	7/64"	1 1/4"
00470 18 212	1/8"	2 1/2"
00470 532 134	5/32"	1 3/4"
00470 316 134	3/16"	1 3/4"
00470 316 2	3/16"	2"
00470 532 212	5/32"	2 1/2"
00470 732 212	7/32"	2 1/2"
00470 14 112	1/4"	1 1/2"
00470 516 112	5/16"	1 1/2"
00470 516 212	5/16"	2 1/2"
00470 14 212	1/4"	2 1/2"
00470 316 3	3/16"	3"
00470 316 312	3/16"	3 1/2"
00470 516 312	5/16"	3 1/2"

## FAMILIA 00475



No. Artículo	d	l	a	s	d1
00475 2 16	2	16	0.55	0.4	1.5
00475 2 20	2	20	0.55	0.4	1.5
00475 2 30	2	30	0.55	0.4	1.5
00475 2 40	2	40	0.55	0.4	1.5
00475 3 16	3	16	0.7	0.6	2.1
00475 3 18	3	18	0.7	0.6	2.1
00475 3 20	3	20	0.7	0.6	2.1
00475 3 30	3	30	0.7	0.6	2.1
00475 3 40	3	40	0.7	0.6	2.1
00475 3 50	3	50	0.7	0.6	2.1
00475 4 12	4	12	0.85	0.8	2.8
00475 4 20	4	20	0.85	0.8	2.8
00475 4 30	4	30	0.85	0.8	2.8
00475 4 40	4	40	0.85	0.8	2.8
00475 4 50	5	50	0.85	0.8	2.8
00475 5 20	5	20	1.1	1	3.4

No. Artículo	d	l	a	s	d1
00475 5 30	5	30	1.1	1	3.4
00475 5 40	5	40	1.1	1	3.4
00475 5 50	6	50	1.1	1	3.4
00475 6 20	6	20	1.4	1.2	4
00475 6 30	6	30	1.4	1.2	4
00475 6 40	6	40	1.4	1.2	4
00475 6 50	6	50	1.4	1.2	4
00475 6 60	7	60	1.4	1.2	4
00475 7 40	7	40	1.4	1.5	4.5
00475 7 50	8	50	1.4	1.5	4.5
00475 8 30	8	30	2	1.5	5.5
00475 8 40	8	40	2	1.5	5.5
00475 8 50	8	50	2	1.5	5.5
00475 8 60	8	60	2	1.5	5.5
00475 8 70	8	70	2	1.5	5.5
00475 8 80	8	80	2	1.5	5.5
00475 10 40	10	40	2.4	2	6.5
00475 10 50	10	50	2.4	2	6.5
00475 10 60	10	60	2.4	2	6.5
00475 12 50	12	50	2.4	2.5	7.5
00475 12 60	12	60	2.4	2.5	7.5